

Basamenti Maxipro / Maxipro Bases



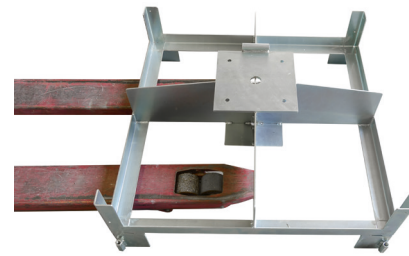
Da appoggio / Support base



Per fissaggio / To be fixed



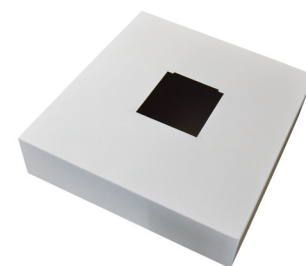
Base da appoggio snodata in acciaio zincato e verniciato (104x104 cm o 84x84 cm) predisposta per l'alloggio di nr. 20 lastre in sasso lavato con piedini regolabili livellanti. Jointed support base in galvanized and painted steel (104x104 cm or 84x84 cm) arranged for the lodging of nr. 20 stone washed plates with adjustable leveling feet.



Base speciale da appoggio snodata per alloggio tranpallet in acciaio zincato e verniciato (104x104 cm o 84x84cm) predisposta per l'alloggio di nr. 20 lastre in sasso lavato con piedini regolabili livellanti. Special jointed support base, for use with pallet trucks, in galvanized and painted steel (104x104 cm or 84x84 cm) arranged for the lodging of nr. 20 stone washed plates with adjustable leveling feet.



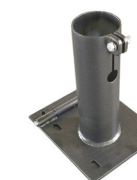
Mobile di servizio copribase (h 75 o 85 cm totali) con piano in acciaio zincato e verniciato (93x93 o 113x113 cm) e pareti in tessuto. Service cabinet to hide base (h 75 or 85 cm total) with top in galvanized and painted steel (93x93 or 113x113 cm) and walls in fabric.



Carter copri lastre (h 24 cm totali) in acciaio zincato e verniciato (85x88 o 105x108). Carter to hide plates (total h 24 cm) in galvanized and painted steel (85x88 or 105x108 cm).



Mobile basso-seduta copri base in acciaio zincato e verniciato (105x108x38 cm totali) con spigoli arrotondati. Low seat cabinet to hide base in galvanized and painted steel (105x108x38 cm total) with rounded edges.



Base snodata per fissaggio a pavimento in acciaio zincato e verniciato (25x30 cm). Jointed base for platform / floor fixing in galvanized and painted steel (25x25 cm).

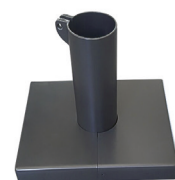


Per fissaggio / To be fixed



Da interrare / To be buried

Accessori / Accessories



Carter copribase (h 6 cm) per base fissaggio a pavimento (40x33 cm). Carter to hide base (h 6 cm) for bases fixed to the floor (40x33 cm).



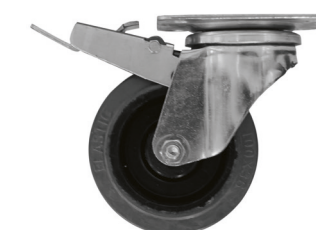
Base piastra quadrata per fissaggio a pedana/pavimento in acciaio zincato e verniciato (75x75x1 cm o 100x100x1 cm) con base snodata in acciaio zincato e verniciato. Square plate base for platform / floor fixing in galvanized and painted steel (75x75x1 cm or 100x100x1 cm) with articulated base in galvanized and painted steel.



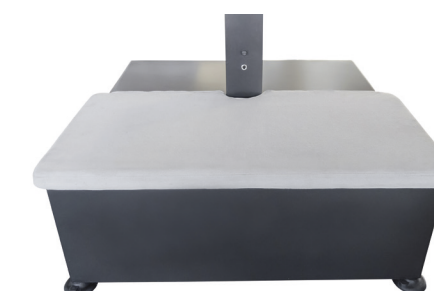
Set tirafondi per base snodata (6 o 4) in acciaio zincato da annegare su getto in calcestruzzo. Set of anchor bolts for jointed bases (6 or 4) in galvanized steel to be embedded on concrete casting.



Set da interrare per base snodata a 3 componenti con piastra, tubo, coperchio in acciaio zincato. 3-component earthenware set for jointed base with plate, tube and cover in galvanized steel.



Kit ruote per base da appoggio. Wheel kit for support base.



Cuscino copri mobile basso seduta. Cushion to hide Low seat cabinet.